



Charter

LIGHTING



Introducing you to

THE VERY DIDDY ART LIGHT*

Enjoy the brilliant scope & quality of light
from this miniature Picture Light -
which can now be battery-operated!



“Little Boy” - Private Family Collection



Few things require more care than the lighting of Art.

- **Intensity**—the proper balance between enough and too much light;
- **Conservation**—the need to eliminate damaging heat and UV rays;
- **Scope**—so that the whole canvas is properly lit with clarity of detail;
- **Tone**—avoiding lights that are cold or harsh;
- **Quality**—most importantly of all, to display colours faithfully

“The new lights are magical! My paintings have never looked so good.”

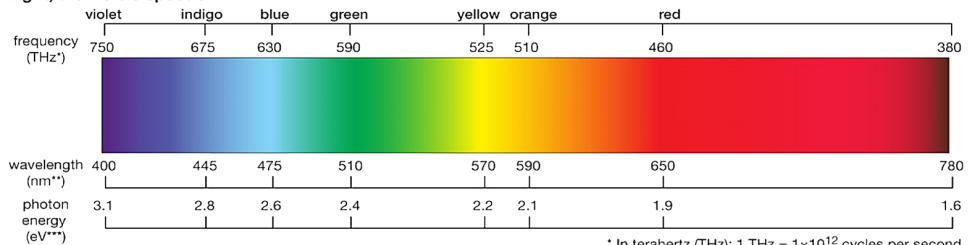
We’ve been bringing beautiful lighting to art for over 30 years, with close attention to every critical element.

We use only the highest quality, durable Light Emitting Diodes (LEDs) which deliver a truly beautiful quality and tone of light, and which will perform consistently over life.

Critically, they are close to perfect in terms of their **Colour Rendering Index (CRI)**. The CRI of our LEDs is 98+, which ensures the optimum balance across all the colours in the visible white light spectrum. The rainbow doesn’t just exist in the sky—those colourful light wavelength elements are in action on every surface that we see.

Nowhere does this matter more than when lighting a painting, to bring out the colours and subtlety of hues that the artist himself chose.

Light, the visible spectrum



* In terahertz (THz); 1 THz = 1×10^{12} cycles per second.
** In nanometres (nm); 1nm = 1×10^{-9} metre.
*** In electron volts (eV).

© 2012 Encyclopædia Britannica, Inc.

These LEDs are also carefully selected for their **Correlated Colour Temperature (CCT)** which is measured in Degrees Kelvin and denotes the lighting ‘tonality’. With LED technology, too often the light is flat or harsh, which will bleach out the colours in your painting.

Our LEDs have a CCT of 2700°K. This brings a wonderful warm richness to the light, like incandescent or tungsten lamps.

Finally, each LED is individually optically lensed so that the lighting coverage will always suit the picture’s size and orientation and make sure the entire canvas is well illuminated. Your paintings will look wonderful!

This carefully customised approach is unique to our range.

“... may I say how delighted we are with our lights! The new lighting of the portrait above the fireplace in particular is a real triumph! “

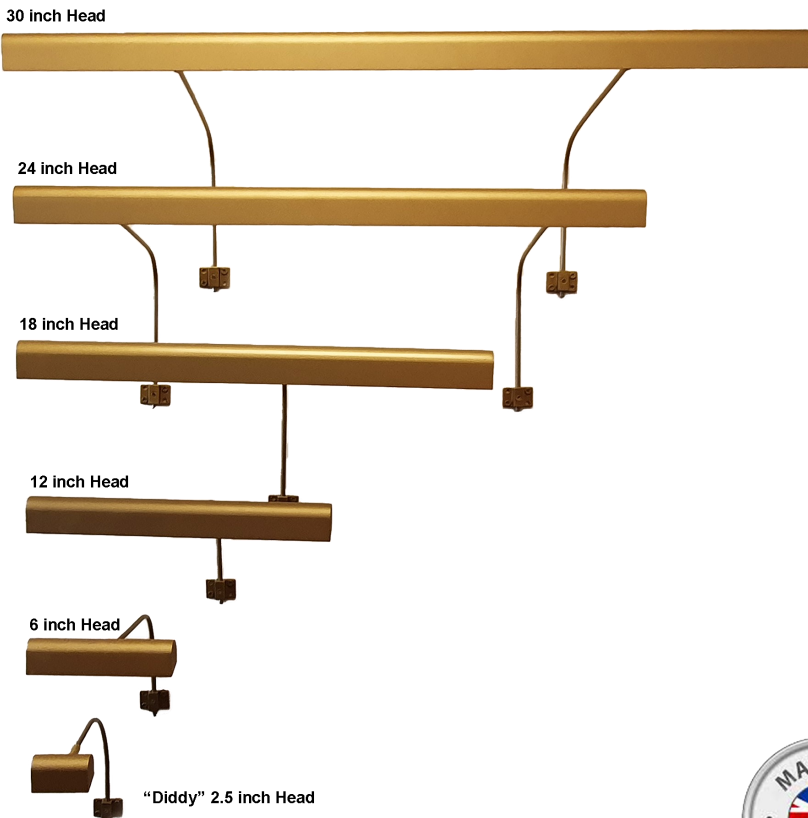
Our range of Art Lights is extensive—having been honed through our many and varied years of working in this specialist field with curators, conservators and private art collectors.

When it comes to picture lights, one size most definitely does not fit all!

From our largest Gallery Art Light (which can be up to 3 Metres long) to our miniature Diddy*, every light is carefully sized to suit its particular painting, and lovingly hand-crafted and assembled in our workshops here in the UK.

FineLine - Range of Picture Lights

Our Finelines are available in a standard range of sizes for simple and accurate selection



Hunting Scene—Private Residence. One Gallery Picture Light replaces three original lights

BEFORE



AFTER



These two images speak for themselves.

Initially, three, quite small, picture lights splashing bright light onto the top of the painting—and nowhere else.

With our bespoke solution—a 2600mm long picture light and 15 variably-lensed LED modules—the whole fabulous painting leaps into dramatic and vibrant life.

“The light is truly fantastic! Never before have I seen all the detail.”

Very Diddy Art Lights* being installed by The Royal Collection Trust





“...I am THRILLED with the result! I really can’t believe the difference. That room has been transformed. Couldn’t be happier!”

It makes us incredibly proud that so many of our clients spontaneously share their very real delight with us§.

6” Finline Art Light, battery powered—Private Residence



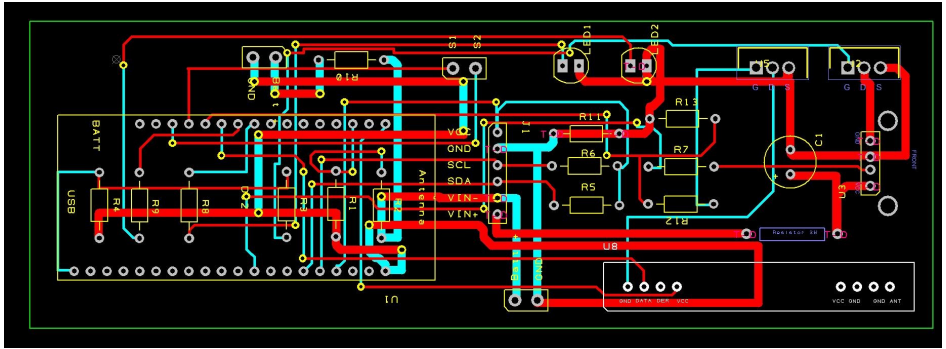
We also invite suggestions for ways—any ways—in which we might be able to improve our products and services, and will respond pro-actively whenever we can to such requests.

Nothing used to hit our ‘In Box’ more often than the difficulty of lighting paintings where there is no readily-available power.

Our response has been to develop a robust and sophisticated battery package—which is most successfully used in conjunction with our famous Very Diddy Art Light*.

So here we introduce you to this wonderful new combination, to give you a quick and clear appreciation of how this can delight you, too.

§ Of course, we are hugely mindful of our clients’ privacy, and never reveal any indication as to who they are, or where they live.



With the same care and attention to detail, the new Intelligent Battery Pack has been developed to provide an unprecedented level of sophistication.

For those of you who like to understand a bit of the ‘Tech’ behind clever things, take a look at this PCB. These are the ‘Brains’ behind the batteries, which deliver the following unique functionality for our picture lights:

- Operation via Remote Control using RF protocols—works even through the canvas— for simplicity and convenience
- You’re in charge—with easy-to-use dimming functionality
- Memory function—light reactivates at the last brightness setting
- Current monitoring to maintain consistent light level throughout life
- Re-charge notification to prevent light exhaustion
- Simple push-fit connections via industry-standard USB ports
- Battery charge level indicator

Not every painting needs—or ought to be—lit to the same levels. Watercolours, for example, are very light-sensitive, and different paintings will have different degrees of tonal density or reflectiveness.

Just as you can alter the light intensity with our standard mains-powered Finesline picture lights, so also can you do so with the new battery-operated system.

We hope we’ve thought of everything—but please bring on any new ideas!

Some practicalities

Picture Light & Battery Packs mounted to back of frame



The picture light is attached to the top of the frame.

The 'Brain-Box' also attaches to the top of the frame. It includes a red indicator light which will light up and reflect off the wall when battery power runs low.

All connections are made using standard USB cables (supplied).

We *don't* supply the screws—because only you know the thickness of your picture frame!

The battery pack attaches to the bottom of the frame—loosely enough to be able to lift it up and off to re-charge.

We offer a standard range of colours, as are shown here.

All our picture lights are hand-painted. A total of five coats are carefully applied, the final one being our special flecked wet paint. This is what gives them such a rich and lustrous finish.

We are also able to colour-match so, if you are keen to harmonise with your room's specific décor, we can help you with that as well.



Old gold: antique bronze: anthracite: white: black

“I couldn’t imagine before quite what an improvement the lighting would make not only to the pictures, but to the whole room—it really is a game-changer.”

At CHARTER LIGHTING we have had the enormous privilege of lighting beautiful paintings and *objets d’arts* for discerning clients in their homes around the world, as well as for many important Heritage Properties and National collections.

Our specialist expertise and services are valued by



National
Trust



Historic
Royal Palaces



Historic England



ENGLISH
HERITAGE



ROYAL
COLLECTION
TRUST

as well as numerous Private Members Clubs, Worshipful Companies, Museums and both public and private Art Collections and Galleries

Please don’t hesitate to contact us if you have any lighting queries and we will be delighted to assist in any way we can.

info@charter.lighting

020 3051 7150

**The Very Diddy Art Light derives its name (and impeccable pedigree) from its widespread use by the Royal Collection Trust throughout our Royal Palaces, Castles and Residences, even finding its way into the Royal Box at Ascot!*

THE VERY DIDDY ART LIGHT

The contemporary classic that packs a real
punch!

Suitable for:-

Portrait Canvas size up to **35cm x 25cm (14" x 10")**

Landscape Canvas size up to **25cm x 35cm (10" x 14")**

Larger sizes available on request

Call: 020 3051 7150

Visit: www.charter.lighting



Charter Lighting
Horns Oak Farm : Horns Oak Road
Meopham : Kent : DA13 0BX
020 3051 7150
info@charter.lighting
www.charter.lighting

